

Bid Notice

Sealed bids will be received by the City Manager of the City of Seaford, 414 High Street, Seaford, DE 19973, until 1:45 p.m., prevailing time on Wednesday, May 4th, 2022, for “**2022 Nutter Park Playground Equipment Installation.**” All bids will be opened in the Council Chambers and read aloud at this time. The City Manager and staff will then evaluate them for compliance.

The bids may be presented to the Mayor and Council at their regular meeting on May 10, 2022, at 7:00 p.m., in Council Chambers, 414 High Street. They may be awarded at this time. The Mayor and Council reserve the right to reject any and all bids.

Bids must be submitted in a sealed envelope, addressed ATTN: City Manager, City of Seaford, P.O. Box 1100, Seaford, DE 19973. The outside of the envelope must be marked “**Attn: City Manager, 2022 Nutter Park Playground Equipment Installation**” and the bidder’s name shall be shown thereon. All proposals must be made on the bid form provided in the specifications. All proposals must conform to the bid documents. Any exceptions will be evaluated for suitability and acceptance is at the sole discretion of the owner.

The successful bidder shall also secure and maintain, at its own expense, during the contract term, the types and limits of insurance outlined in the contract documents.

Complete specifications and contract documents will be available at the City of Seaford, 414 High Street, Seaford, Delaware 19973. Copies may be obtained by calling Ashley Heinicke, City Clerk at (302) 629-9173.

No bids may be withdrawn after the scheduled time from the receipt of bids for a period of sixty days. The City of Seaford reserves the right to reject any and all bids and to waive any or all informalities in any bid or bids.

City of Seaford

Charles D. Anderson
City Manager

INFORMATION FOR BIDDERS

BIDS will be received by the City of Seaford (herein called the “Owner”) at the office of the **City Manager, City Hall, 414 High Street, Seaford, Delaware until 1:45 p.m., prevailing time, on Wednesday, May 4th, 2022**, and then at said location publicly opened and read aloud.

BIDDERS are advised that the bid is for all materials, equipment, manpower and services, required to install a playground structure, protective surfacing, edging, access provisions and other incidental items as described in this specification.

Each BID must be submitted in a **sealed envelope**, addressed to the City Manager, City of Seaford, City Hall, 414 High Street, P.O. Box 1100, Seaford, DE 19973. Each sealed envelope containing a bid must be **plainly marked on the outside as “Attn: City Manager – Nutter Park Playground Equipment Installation” and the envelope should bear on the outside the name of the BIDDER and their address.** If forwarded by mail, the sealed envelope containing the BID must be enclosed in another envelope addressed to the OWNER. Any BID received after that time and date specified shall not be considered.

All BIDS must be made on the required BID proposal form. All blank spaces for BID prices must be filled in, in ink, or type written, and the BID form must be fully completed and executed when submitted. One copy of the BID form is required. BIDS and/or alternate bids submitted by FAX will not be accepted.

The OWNER may waive any informalities or minor defects or reject any and all BIDS. Any BID may be withdrawn prior to the above scheduled time for the opening of the BIDS or authorized postponement thereof. No BIDDER may withdraw a BID within sixty (60) days after the actual date of the opening thereof.

BIDDERS must satisfy themselves of the accuracy of the required work in the BID documents by a review of the CONTRACT DOCUMENTS. After BIDS have been submitted, the BIDDER shall not assert that there was a misunderstanding concerning the location, use of property or conditions outlined in the CONTRACT DOCUMENTS.

Information obtained from an officer, agent or employee of the OWNER or any other person shall not affect the risks or obligations assumed by the CONTRACTOR or relieve them from fulfilling any of the conditions of the contract.

The OWNER may make such investigation as they deem necessary to determine the ability of the BIDDER to provide the necessary materials and/or labor and equipment to carry out the work and the BIDDER shall furnish to the OWNER all such information for this purpose as the OWNER may request. The OWNER reserves the right to reject

Page 2
Information for Bidders

any BID if the evidence submitted by, or investigations of, such BIDDER fails to satisfy the OWNER that such BIDDER is properly qualified to carry out the obligations of the Agreement. A conditional or qualified BID will not be accepted.

The Contractor awarded the bid will commence the work required by the CONTRACT DOCUMENTS after the NOTICE TO PROCEED and will complete the work in thirty (30) calendar days, unless the period for execution is extended in writing by the City Manager. No work will take place on Sundays. The Contractor will be charged liquidated damages in the amount of \$100 per day if the WORK extends past the thirty (30) calendar days or after the agreed upon extension date.

The contractor shall submit a written certificate with each progress payment request that states he has paid his labor, vendors, suppliers, and subcontractors in full, less applicable retainage, for the period covered by his payment request. The Contractor shall provide the OWNER proof of release of liens prior to the OWNER issuing the final payment for the project

Award may be made to the lowest, responsible BIDDER. The Mayor and Council reserve the right to reject any and all bids. **The bids may be presented to the Mayor and Council at their Regular Meeting on May 10, 2022, at 7:00 p.m., in Council Chambers, 414 High Street, Seaford, DE.**

All applicable laws, ordinances and the rules and regulations of all authorities having jurisdiction over the WORK shall apply to the contract throughout.

Each BIDDER is responsible for reading and being thoroughly familiar with the CONTRACT DOCUMENTS. The failure of the BIDDER to do any of the foregoing shall in no way relieve any BIDDER from any obligation respective to their BID.

Detailed Specifications

General Requirements – Sealed bids are being accepted for the proposed Nutter Park playground equipment installation as outlined herein. The price bid shall include furnishing all labor, equipment, materials, and appurtenances necessary to construct a solid playground structure, protective surfacing, edging, access provisions as shown in the plan drawing and specifications.

The Contractor shall provide all temporary utilities for the project. All costs associated with any required permits and licenses will be the contractor's responsibility.

Safety – All public playground equipment supplied shall meet all applicable provisions of the current "Handbook for Public Playground Safety" published by the Consumer Product Safety Commission (CPSC), and of ASTM F1487-17 "Standard Consumer Safety Performance Specification for Playground Equipment for Public Use," published by the American Society for Testing and Materials (ASTM). Products bearing the certification seal of the International Play Equipment Manufacturers Association (IPEMA) have received written validation of compliance with ASTM F1487-17.

All other specifications necessary for the completion of the work and not mentioned herein, shall conform to the current edition of the International Building Code and/or the manufactures specifications.

Site Work – The Contractor shall provide all necessary site work required to place the new playground equipment, required foundations, edging and energy absorbing protective surfacing. All areas adjacent to the new playground structure be backfilled and properly graded and seeded to provide positive drainage away from the structure and edging. Restoration shall provide a smooth transition to undisturbed areas which shall be free of all localized depressions or abrupt changes in grade that may trap or otherwise misdirect surface drainage or create possible obstructions to pedestrian travel. All disturbed areas shall be top soiled (4" minimum) seeded and stabilized upon the completion of construction.

Access – Install accessible access point to the facility in accordance with the most recent ADA requirements.

Playground Equipment – The equipment supplied and installed shall be as manufactured by Miracle Recreation Equipment; *Tot's Choice Expansion Structure*, Model #704-S090J or approved equal.

Steel Posts – The steel posts shall be constructed of 3-1/2" tube, 13 ga. with 3-1/2" round end caps mechanically fastened to the top end. Posts for roof attachment shall not receive end caps. After fabrication, all posts and end caps shall have a finished

coating that is tested in accordance with ASTM D-792, D-523, D-2794, D-1737, D-3363, D-3359 (b), B117 and D-2247.

Ladder – All ladders shall comprise two uprights with horizontal rungs solid welded between. Models with no footings shall also have a 41-1/2" (KC and TCX) or 37" (TC) long bottom rung comprised of 1" pipe, solid welded to uprights. The rungs and uprights shall be constructed of 1" pipe, formed. The end ladder shall measure 104-1/4" x 37-1/4"; the end ladder with 1' top rung shall measure 39-1/4" x 37-1/4"; end ladder with 2' top rung shall measure 51-1/4" x 37-1/4"; end ladder with 3' top rung shall measure 63-1/4" x 37-1/4" or approved equal ladder structure. All fasteners or for deck and component attachment shall be aluminum alloy. All hardware shall be a corrosion resistant, 18-8, stainless steel, vandal resistant fasteners. The fasteners and ladders shall have a finished coating that is tested in accordance with ASTM D-792, D-523, D-2794, D-1737, D-3363, D-3359 (b), B117 and D-2247.

Wave Walker or Approved Equal Climber – Climbers shall be ground-to-deck or between deck climbing components that encourage balance and coordination. Models shall include top and bottom rails and a half enclosure. All models shall be attached to or between either a 4', 5', 6'-6" or 8' deck. Components shall have a 3', 4', 5'-6" or 7' rise from one end of top/bottom rails to the opposite end. Top rail shall be constructed of 1" pipe, 12 ga. Bottom rail shall be constructed of 1-1/4" pipe, 10 ga. Top and bottom rails shall have 'waves' flowing from one end of the component to the other, created by uniform bends or approved equal design. Rails shall measure 96" (3' rise), 101-9/16" (4' rise), 111-3/16" (5'-6" rise) or 122-3/4" (7' rise) in length. The half enclosure assembly shall consist of an outer upright, cross bar, enclosure upright and 5 spokes. Outer upright, cross bar and enclosure shall be constructed of 1" pipe "gator grip" or approved equal. Spokes shall be constructed of 3/4" x 1" oval tube. Enclosure assembly shall measure 41-1/16" in height and 28-7/16" in width. Enclosure assembly shall be solid welded. Climber and enclosure assemblies shall include corrosion resistant, 18-8, stainless steel, vandal resistant fastener hardware. The enclosure, rails and fasteners shall have a finished coating that is tested in accordance with ASTM D-792, D-523, D-2794, D-1737, D-3363, D-3359 (b), B117 and D-2247.

Sky Wheels or Approved Equal – Wheels shall be deck-mounted or freestanding. Wheels shall be set at 15-degree angles so the user will grasp the first, suspending his or her body, and roll around to within reach of the next wheel until reaching the opposing end. The frame assembly shall consist of sleeves constructed of 5" schedule 40 galvanized pipe welded to a "U" shaped brace and diagonal supports constructed of 2-3/8" tube, 12 ga., all solid welded. The header assembly shall consist of a 10'-6" beam constructed of 2-3/8" tube (2-3/8" OD), a 9 ga. 1010 hot rolled, Flo-Coat, galvanized pipe manufactured from steel, cold formed and high frequency induction welded continuously. It shall conform to ASTM A-135 and ASTM A-500 and shall be tested in accordance with ASTM E-8. The beam shall be welded to a 4'-0" end crossbars of 2-3/8" tube, 12 ga. The header shall contain three stubs of 1" pipe with caps and threaded inserts solid welded. The sky wheels shall each be

constructed of a round bar steel hub solid welded between five spokes of 1" pipe with mashed ends and a formed ring of 1" pipe. The wheels shall be field assembled to the header stubs using two Delrin washers and other hardware. All fasteners shall be corrosion resistant, 18-8, stainless steel, vandal resistant fasteners. The header assembly, clamps, and sky wheels shall be a finished coating that is tested in accordance with ASTM D-792, D-523, D-2794, D-1737, D-3363, D-3359 (b), B117 and D-2247.

Swing Ring Bridge or Approved Equal – Swing Ring shall feature oversized moving handholds. The header assembly shall consist of the header beam, crossbar, and the bar sleeve. The header beam and the cross bar shall be constructed of 2-3/8" tube, 12 ga., formed for 90-degree swing rings. The entire assembly shall be solid welded. The swing rings assembly shall consist of a pivot plate, spacer, swing ring and oillite flange bearings. The pivot plate shall be constructed of 7 ga. A-60 Galvannealed sheet. The spacer shall be constructed of 2" schedule 40 galvanized pipe, and the swing ring shall be constructed of 1" pipe, formed, and welded with plastic pipe plugs inserted in open ends. The hanger assembly shall consist of a hanger cover and side cover, both constructed of 7 ga. A-60 Galvannealed sheet. For models with optional end climbers, the end climber assembly shall be constructed of 1" pipe, formed. The assembly shall be solid welded. For models with optional deck enclosures, the enclosure assemblies shall consist of enclosure rails and uprights. The enclosure rails shall be constructed of 1" pipe, formed, mashed and punched. The uprights shall be constructed of 3/4" x 1" oval tube (*except Tots' Choice models which shall be 1" tube,*) mashed on both ends. The enclosure assemblies shall be solid welded. The posts shall be constructed and finished in the same manner as deck posts. Each assembly shall include using corrosion resistant, 18-8, stainless steel, vandal resistant fasteners as well as an all-aluminum blind rivet or aluminum drive rivet with a stainless steel pin that is both corrosion and vandal resistant hardware. The header, hanger, swing rings, end climber, and enclosure assemblies shall have a finished coating that is tested in accordance with ASTM D-792, D-523, D-2794, D-1737, D-3363, D-3359 (b), B117 and D-2247. .

Bongo Jungle Climber (L-shaped) or Approved Equal – Climber shall provide children with a physically challenging and imaginative play experience. Designed for attachment between 2' or 3' decks, it shall contain pods attached to vertical rungs which are field assembled between header and chain-anchors to concrete footings, suspended so that children must step onto successive dynamic pods and grasp vertical rungs to proceed across the area. Deck enclosures shall be provided. The model shall contain three vertical rung assemblies, including a clevis, a 62-13/16" length of 1" pipe with 5-7/8" diameter mounting plate of 11 ga. G-90 galvanized solid welded, factory-installed 3/8" eye-bolts and 3/8" proof coil chain, and a chain-anchor of 6/0 straight link coil chain. The vertical rungs shall be field assembled to stepping pods, which shall be constructed of Rockite (rotational molded polyethylene). Each pod shall contain a honeycomb-textured, hex-shaped top surface measuring approximately 16" diameter. Pods shall measure 12" high. The top rail shall be constructed of 2-3/8" tube, 12 ga. solid welded. Header supports shall be aluminum alloy. Deck enclosures shall consist of rails and uprights. The rails shall be

constructed of 1" pipe and the uprights shall be constructed of 3/4" x 1" oval tube. Each enclosure shall be solid welded. The assembly shall include fasteners using corrosion and vandal resistant, 18-8, stainless steel as well as an all aluminum blind rivet or aluminum drive rivet with stainless steel pin that is both corrosion and vandal resistant hardware. The stepping pods shall have color molded in. The vertical rungs, deck enclosures and clamps shall have finished coating that is tested in accordance with ASTM D-792, D-523, D-2794, D-1737, D-3363, D-3359 (b), B117 and D-2247.

Parallel Bars (Kid's Choice) or Approved Equal – Bars shall be designed to connect fitness clusters. The 8' parallel bars shall be formed and drilled 1-3/8" tube, A-60 Galvannealed. The assemblies shall contain fasteners using corrosion resistant, 18-8, stainless steel, vandal resistant hardware. The bars and clamps shall be a finished coating that is tested in accordance with ASTM D-792, D-523, D-2794, D-1737, D-3363, D-3359 (b), B117 and D-2247.

Cargo Climb Overs or Approved Equal – Climb Overs shall be climbing challenges designed to help children develop hand-to-eye coordination, balance, and muscle control. These components can either be freestanding or deck mounted. It shall consist of six, 1" tube rungs solid welded to either three or four vertical supports, depending on the model, of a welded chain with links sufficiently wide to allow them to pass one another freely, eliminating the tendency to kink. The links are low carbon zinc plated steel with a polyvinyl chloride. The chain shall be attached to an anchor and top rail by 5/16" "S" hooks. The cargo climber shall measure 84-1/8" in length. The 24-1/8" run shall be constructed of 1" pipe. The anchor shall be constructed of 1" pipe, formed, with three or four "U" shaped loops of 5/16" diameter wire, depending on the model, welded to the top. The top rail for shall be constructed of 2-3/8" tube, 12 ga. with three or eight "U" shaped loops of 5/16" diameter wire, depending on the model, welded to the top. All fasteners for deck and component attachment shall be corrosion resistant, 18-8, stainless steel, vandal resistant hardware. The top rail, anchor, and fasteners shall have a finished coating that is tested in accordance with ASTM D-792, D-523, D-2794, D-1737, D-3363, D-3359 (b), B117 and D-2247. The cargo climb-over shall be polyvinyl coated.

Risk Management Sign – Shall be intended to inform the parents and children that adult supervision is recommended, along with smart play on the equipment in the play area. Sign shall be constructed of aluminum 3003-H14 .08" thick powder coated white with screen printed overlay. Steel frame shall be 2 3/8" OD 12 ga. galvanized steel tube. Extension Tube shall be 2.375 12GA GLV-IL X 24' tube round and use corrosion resistant, 18-8, stainless steel, vandal resistant fastener hardware. Frame shall have a finished coating that is tested in accordance with ASTM D-792, D-523, D-2794, D-1737, D-3363, D-3359 (b), B117 and D-2247.

Protective Surfacing – The protective surfacing shall be a minimum of 12" thick and provide the required fall protection for the users of the swing set. The successful bidder shall submit type proposed and the source of supply for approval by the owner. The submitted information shall include how the installed system shall meet all applicable fall protection requirements.

Edging Material - Shall be used to surround the playground structure area no less than 6ft beyond all playground equipment, in all directions. One appropriate opening shall be provided to access the playground equipment. Opening shall be 36" minimum. All barrier sections shall be installed with stakes (or other fasteners as recommended by the manufacturer) which hold the materials together and in place. The edging shall measure 4" thick x 12" high x length required to enclose the area and retain the protective surfacing. The stakes shall be constructed of 3/4" hot dipped galvanized steel bar either 30" (for single) or 42" (for double-stacked.) Two stakes shall be required per section, 36" on center. Stakes positioned at timber section ends shall be shared by other sections. All hardware shall be as recommended by the manufacture.

Warranty – The successful bidder will be required to provide a finished product of the highest quality and appearance possible. Prior to final payment, the playground structure, protective surfacing and edging material installations (and adjacent graded areas) shall be inspected by representatives of the City of Seaford. The contractor must certify that the installation meets all ADA and other applicable requirements. The contractor will be required to replace or repair any portion of the work that is not in conformance with the specified requirements. The contractor shall provide the City with a minimum of one year warranty for the installed facility to include all materials and workmanship.

Insurance - The successful bidder must also provide an insurance certificate prior to the commencement of work. Comprehensive Liability, Bodily Injury and Property Damage, and Workmen's Compensation will be required in the amounts listed herein. The contractor shall secure and maintain at his own expense, during the contract term a commercial general liability insurance which insures against claims for bodily injury, property damage, personal injury and advertising injury arising out of or in connection with, any operations or work under this contract whether such operations are by the contractor, its employees, or subcontractors or their employees. The policy shall provide minimum limits of liability as follows:

\$500,000.00 combined single limit – each occurrence

\$500,000.00 combined single limit – general aggregate

\$500,000.00 combined single limit – products/completed operations aggregate

\$200,000.00 Business auto liability – combined single limit

\$500,000.00 Workers compensation – each accident, each employee

All insurance shall name the owner; it's appointed and elected officials, officers, servants, agents, and employees as insured. The commercial general liability policy shall afford coverage for the explosion, collapse and underground hazards, contractual liability and liability arising from independent contractors. Products and completed operations insurance shall be maintained for two years after completion of the project. The contractor shall submit proposed insurance instruments to the City Manager prior to execution for approval.

**BID PROPOSAL FOR
Nutter Park Playground Equipment Installation
For the City of Seaford**

To: City Hall
Attn: City Manager
414 High St.
PO Box 1100
Seaford, DE 19973

Gentlemen,

Proposal of _____ (hereinafter called "Bidder"), organized and existing under the laws of the State of Delaware doing business as _____ (insert "a corporation" "partnership", or "an individual" as applicable) to the City of Seaford, Delaware (hereinafter called "Owner.")

In compliance with your Advertisement for Bids, BIDDER hereby proposes to supply all materials and labor necessary for the Nutter Park Playground Equipment Installation in strict accordance with the CONTRACT DOCUMENTS, within 30 calendar days, and at the prices stated below.

By submission of this BID, each BIDDER certified, and in the case of a joint BID each party thereto certified as to his own organization, that this BID has been arrived at independently, without consultation, communications, or agreement as to any matter relating to this BID, with any other BIDDER or with any competitor.

BIDDER hereby agrees to commerce WORK under this contract on or before a date to be specified in the NOTICE TO PROCEED and to fully complete the PROJECT within thirty (30) calendar days thereafter.

Furnish & install all materials and labor for the Nutter Park Playground Equipment for the prices stated below:

ITEM	PRICE
1) Playground Structure	\$ _____
2) Protective Surfacing	\$ _____
3) Edging Material	\$ _____
4) Installation	\$ _____
TOTAL BID ITEMS 1-4	\$ _____

The above bid amount shall include all pricing for all required materials, labor and incidental items required to produce a final product weather listed or not.

NOTE: Bids shall include all sales taxes and all other applicable taxes and fees.

Signature: _____

Date: _____

Printed Name: _____

Address:

E-mail: _____

Phone No.: _____ Cell No: _____

City of Seaford

Nutter Park Playground Equipment Installation

4/28/2022 Bid Addendum

Attached hereto you will find are clarifying components of the Nutter Park Playground Equipment Installation Bid for the City of Seaford. Please note all changes and clarifications listed below:

- ❖ Provided below are two documents:
 - An aerial plan and photo of where the playground is to be located within the park
 - Two views of the structure specified in the bid.
- ❖ No bonding requirements need to be provided by the bidder.
- ❖ The original bid form document/contract is the only form required to submit for this project. The specifications are for a specific playground structure, however, the City will accept other models if comparable and deemed equal by the City. The bidder shall submit all documentation necessary to support the claim that the proposed equipment is equal in every aspect.
- ❖ The bidder will have 30 days to complete the project starting from the first day the work has begun at the site.
- ❖ The city will not charge liquidated damages if the project exceeds the 30-day timeframe. The language referenced in the bid documents on Page 2, Paragraph two, referencing \$100/day liquidated damages is hereby eliminated.
- ❖ The project must be completed no later than June 30, 2022.

Bids must be submitted in a sealed envelope, addressed ATTN: Charles Anderson, City Manager, City of Seaford, P.O. Box 1100, Seaford, DE 19973. The outside of the envelope must be marked **"Attn: City Manager, Nutter Park Playground Equipment Installation,"** and the bidder's name shall be shown thereon. All proposals must be made on the bid form provided in the specifications. All proposals must conform to the bid documents. Any exceptions will be evaluated for suitability and acceptance is at the sole discretion of the owner.

Sincerely,
City of Seaford



Charles Anderson
City Manager

BID ADDENDUM ACKNOWLEDGEMENT FORM

I, _____, am hereby in receipt of the bid addendum for the City of Seaford
– **Nutter Park Playground Equipment Installation**. I agree the presented changes are hereby set as
required specifications in this bidding process.

Signature of Acknowledgement

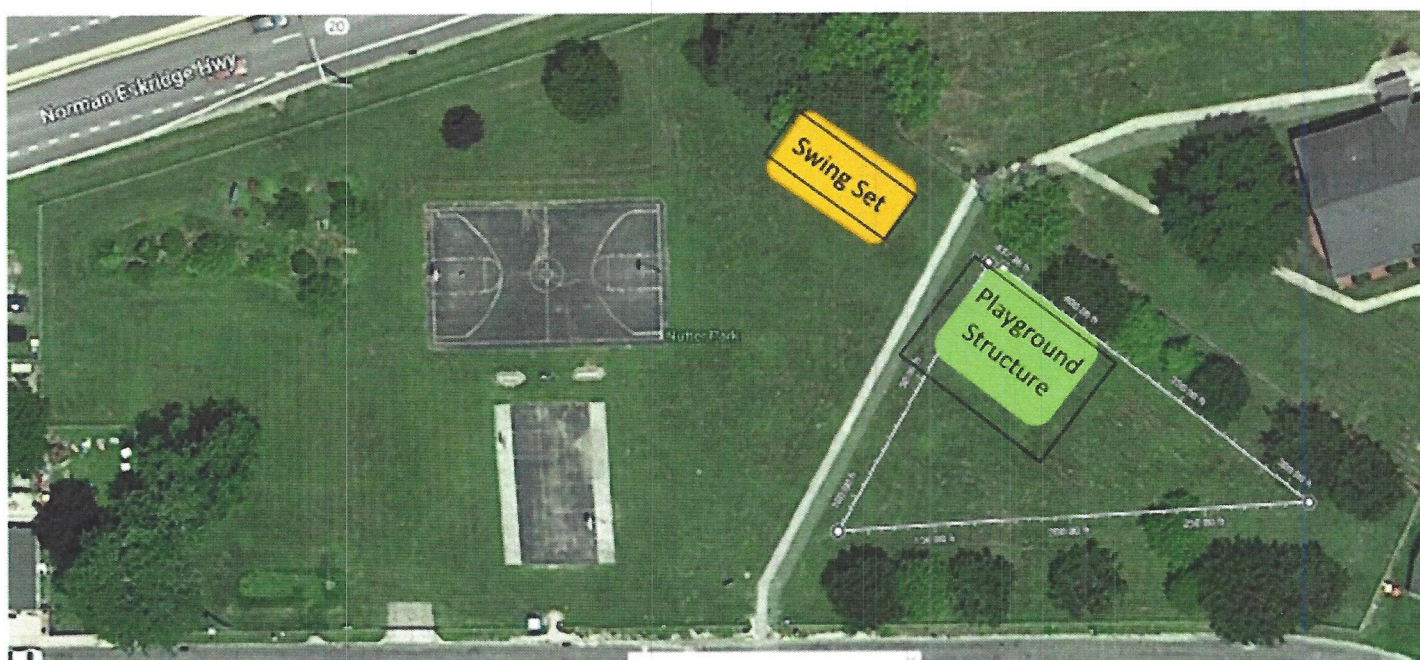
Date

Company

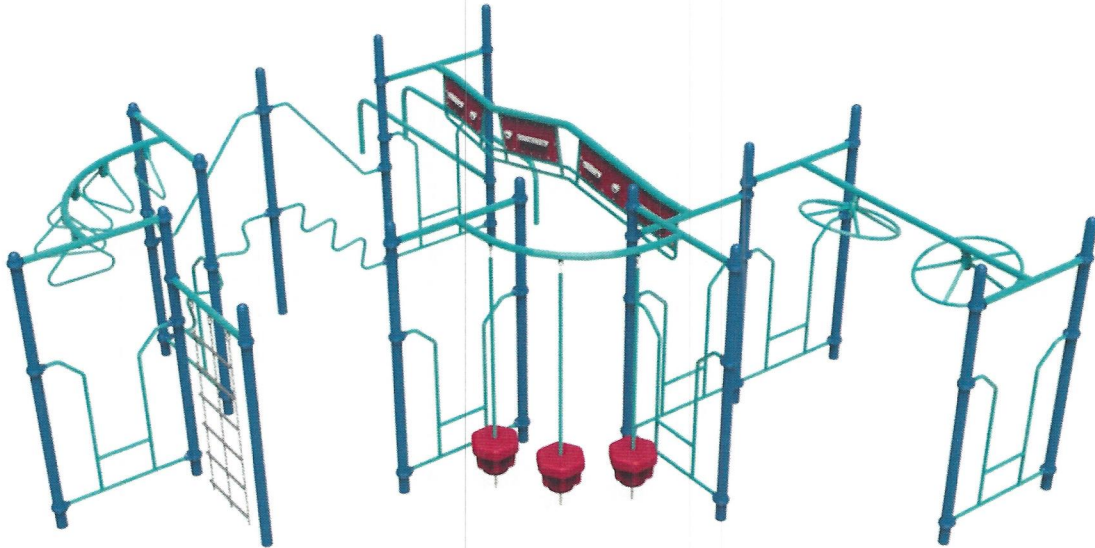
Nutter Park Playground Project 2022



The photo above shows the current swing set structure that was installed in 2018 – on the far side of the playground is a sidewalk and the placement of the proposed playground structure would be located on the other side of the sidewalk.



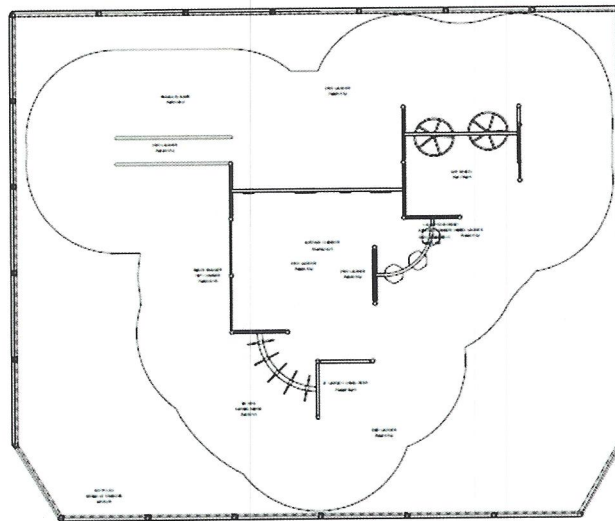
The photo above is an aerial view of the proposed location for the playground structure. The white triangle shows there is about 432 lineal feet (or about 8,000sqft) of space in the area.



Nutter Park Seaford, DE

AGE GROUP: 5-12	
ELEVATED PLAY ACTIVITIES - TOTAL	0
ELEVATED PLAY ACTIVITIES ACCESSIBLE BY TRANSFER	0 REQ'D 0
ELEVATED PLAY ACTIVITIES ACCESSIBLE BY RAMP	0 REQ'D 0
GROUND LEVEL ACTIVITY TYPE	3 REQ'D 0
GROUND LEVEL QUANTITY	6 REQ'D 0

FOR KIDS AGES
5-12
YEARS



R0094_44599581176

✓ COMPLIES TO ASTM/CPSC

✓ COMPLIES TO ADA

To promote safe and proper equipment use by children, Miracle recommends the installation of either a Miracle safety sign or other appropriate safety signage near each play system's main entry points to inform parents and supervisors of the age appropriateness of the play system and general rules for safe play.

THE PLAY COMPONENTS IDENTIFIED IN THIS PLAN ARE IPEMA CERTIFIED. THE USE AND LAYOUT OF THESE COMPONENTS CONFORM TO THE REQUIREMENTS OF ASTM F1487.

AN ENERGY ABSORBING PROTECTIVE SURFACE IS REQUIRED UNDER & AROUND ALL PLAY SYSTEMS.

GROUND SPACE: 28'40" x 21'40"

PROTECTIVE AREA: 41'10" x 35'40"

DRAWN BY

DATE: 4/25/2022

fax the confirmation back to 302-629-9307, Attention – Ashley Heinicke.